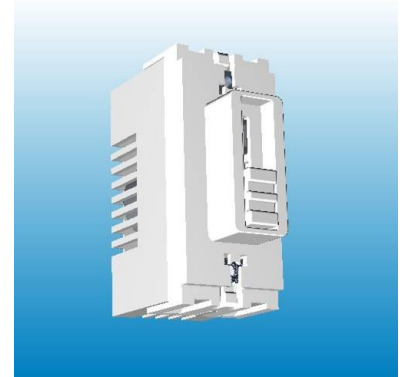




## Slider Grid Dimmer Module



### Description

Slider Grid dimmer module designed to fit in a standard 35mm box but where more are required together a 47mm box is preferable. The 250VA and 400VA versions occupy one grid position, the 630VA two positions

Units can be mounted as multiple items as long as maximum loading rules are observed (single gang box max 630W, double gang box max 1000W)

Push/push action for on/off function regardless of slider position

Built-in thermal cutout for continuous overload conditions

As a safety feature units do not dim out completely

The units can be used on tungsten and low voltage (transformer) systems

### Technical Details

Mains Voltage 220-240V AC 50Hz

Colour: white

Comply with EN 60669-2-1:2000 Safety and EN55015:1996 & EN61000 EMC standards

Accessories include full set of adaptors for MK, MEM, Crabtree and DETA grid systems

Three models:

40-250VA part number 6SGD250

40-400VA part number 6SGD400

40-630VA part number 6SGD630

This design is covered by patent GB2419741

# Specification